

What are the possible side effects of SPRAVATO®?

Serious side effects of SPRAVATO® include feeling sleepy (sedation or loss of consciousness); feeling disconnected from yourself, your thoughts, feelings and things around you (dissociation); breathing problems (respiratory depression and respiratory arrest); abuse and misuse; increased risk of suicidal thoughts and behavior; increased blood pressure; problems with thinking clearly; and bladder problems.

Most Common Side Effects

- Dissociation
- Dizziness
- Nausea
- Feeling sleepy (sedation)
- Spinning sensation
- Decreased feeling of sensitivity (numbness)
- Feeling anxious
- Lack of energy
- Increased blood pressure
- Vomiting
- Feeling drunk
- Feeling very happy or excited

SPRAVATO® is administered under the supervision of a healthcare provider who can help you if any of these side effects occur.

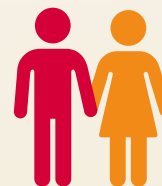


If these common side effects occur, they usually happen right after taking SPRAVATO® and go away the same day

Please see Important Safety Information in this brochure and see full [Prescribing Information](#), including Boxed WARNINGS, and [Medication Guide](#) for SPRAVATO® and discuss any questions you may have with your healthcare provider.



SPRAVATO® plus oral antidepressant offers a minimal risk for sexual dysfunction compared to placebo plus oral antidepressant in clinical studies



Sexual dysfunction was not seen in more than 2% of patients in the SPRAVATO® clinical trials.

Spravato®
(esketamine) 
28 mg nasal spray 

You've decided to try SPRAVATO®. What's next?

After you and your healthcare provider have decided SPRAVATO® is right for you — and you understand the benefits and risks — you can start planning for treatment.



SPRAVATO® is taken with an oral antidepressant.



You administer SPRAVATO® nasal spray yourself under the supervision of a healthcare provider at a certified SPRAVATO® treatment center.



SPRAVATO® is taken twice a week for the first four weeks.



After the first four weeks, you and your doctor will discuss and determine if treatment should be continued and the dose and how often you'll receive SPRAVATO®.



Scan here to watch a video about using the SPRAVATO® nasal spray

Please see Important Safety Information in this brochure and see full [Prescribing Information](#), including Boxed WARNINGS, and [Medication Guide](#) for SPRAVATO® and discuss any questions you may have with your healthcare provider.

SPRAVATO® is taken at a certified treatment center

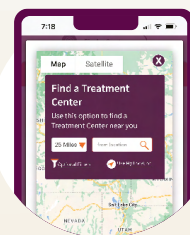
To help ensure patient safety, SPRAVATO® is administered under the supervision of a healthcare provider at a treatment center that is certified in the SPRAVATO® Risk Evaluation and Mitigation Strategy (REMS) Program. This could be at a different location than your usual doctor's office.



After you administer SPRAVATO®, there will be an observation period of at least two hours, during which you will rest comfortably while a healthcare provider at the treatment center monitors you for possible side effects.



Because of possible side effects affecting mental alertness and motor coordination, you won't be able to drive, operate machinery or do anything where you need to be completely alert until the next day. You'll need to plan for rides on treatment days.



Work with your healthcare provider to locate a treatment center that is right for you.



Scan here to locate certified SPRAVATO® treatment centers

Spravato®
(esketamine) 
28 mg nasal spray 

What happens at your first visit to a treatment center?

Your first visit to the certified SPRAVATO® treatment center will be a consultation. The treatment center will:



Receive your medical information from your healthcare provider.



Conduct its own assessment to determine if SPRAVATO® may be right for you.



Verify your insurance information as part of the eligibility confirmation.



Remember: Make sure to follow up with your healthcare provider after your treatment plan is built if you have questions

Please see Important Safety Information in this brochure and see full [Prescribing Information](#), including Boxed WARNINGS, and [Medication Guide](#) for SPRAVATO® and discuss any questions you may have with your healthcare provider.



If SPRAVATO® is recommended, the treatment center will build a treatment plan with you and enroll you in the SPRAVATO® Risk Evaluation and Mitigation Strategy (REMS) Program.



Your healthcare provider will continue to be involved with your care during SPRAVATO® treatment and will be available to answer questions or address concerns as you undergo treatment.



Spravato®
(esketamine) 
28 mg nasal spray 

CONSIDER
SPRAVATO®

BENEFITS OF
SPRAVATO®

SIDE EFFECTS

TAKING
SPRAVATO®

STARTING
TREATMENT

SUPPORT

SUICIDAL
THOUGHTS &
ACTIONS

What should you know about ongoing visits to the treatment center?



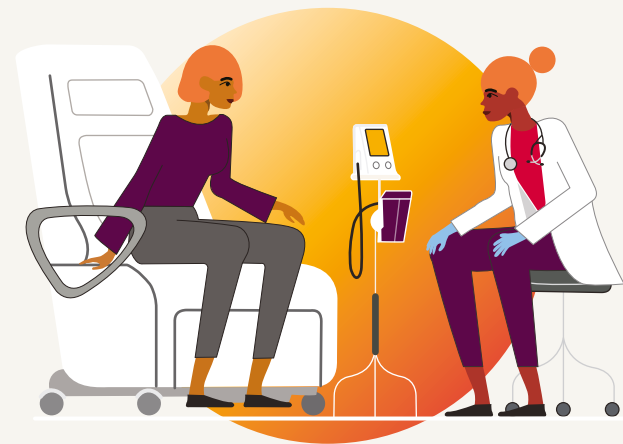
You may start treatment as soon as your second visit to the SPRAVATO® treatment center.



Bring a form of entertainment, like a book or playlist, for the two hours after treatment when a healthcare provider at the treatment center will monitor you.



Please see Important Safety Information in this brochure and see full [Prescribing Information](#), including Boxed WARNINGS, and [Medication Guide](#) for SPRAVATO® and discuss any questions you may have with your healthcare provider.



Avoid eating two hours before, and drinking liquids 30 minutes before, the treatment session. Some patients taking SPRAVATO® may experience nausea or vomiting.



If you take a nasal corticosteroid or nasal decongestant medicine, take these medicines at least one hour before taking SPRAVATO®.



Scan here to learn more about treatment visits when taking SPRAVATO®

Spravato®
(esketamine) 
28 mg nasal spray 

CONSIDER
SPRAVATO®

BENEFITS OF
SPRAVATO®

SIDE EFFECTS

TAKING
SPRAVATO®

STARTING
TREATMENT

SUPPORT

SUICIDAL
THOUGHTS &
ACTIONS

Is support available for people who take SPRAVATO®?

Spravato withMe

Once you and your doctor have decided that SPRAVATO® is right for you, ask your doctor about enrolling in SPRAVATO withMe—the support program that’s by your side from the start



Get started by getting in touch with a SPRAVATO withMe Care Navigator at **1-844-4S-WITHME** (1-844-479-4846), Monday through Friday, from 8:00 AM to 8:00 PM ET. Multilingual phone support is available.

You can pay as little as \$10 for your SPRAVATO® medication with the SPRAVATO withMe Savings Program

Spravato withMe	Spravato (esketamine)
Medical Claims	Pharmacy Claims
Payer ID: 56155	BIN: 610020
GROUP: 00003636	GROUP: 99994002
Members: 000000000	Members: 00000000000
<small>Physicians: For medical claims, patient may direct payment to you or else to receive a mailed rebate check. Call 855-872-1776 to understand payment selection made by patient.</small>	
<small>Please read the full Prescribing Information, including Boxed WARNINGS and Medication Guide for SPRAVATO®, and discuss any questions you have with your doctor.</small>	
<small>PROGRAM REQUIREMENTS APPLY.</small>	

If you’re commercially insured and eligible, our Savings Program could help you pay as little as \$10 per treatment for SPRAVATO® medication costs. There are quantity limits and a maximum program benefit of \$8,150 per calendar year. Savings may apply to your co-pay, co-insurance, or deductible. The program does not cover the cost of treatment observation. You may participate without sharing your income information.

See program requirements at [Spravato.com/SavingsRequirements](https://spravato.com/SavingsRequirements).

Please see Important Safety Information in this brochure and see full [Prescribing Information](#), including Boxed WARNINGS, and [Medication Guide](#) for SPRAVATO® and discuss any questions you may have with your healthcare provider.



Actor portrayal.

Observation Rebate Program for eligible commercially insured patients



Pay \$0 after rebate for observation of each treatment

Eligible patients using commercial or private insurance can save on out-of-pocket treatment observation costs for SPRAVATO®.

If you’re eligible, you can pay \$0 after rebate for this observation period for each SPRAVATO® treatment session with the SPRAVATO withMe Observation Rebate Program. There is a maximum program benefit of \$500 per calendar year. Not valid for residents of MA, MI, MN, or RI. See program requirements at [Spravato.com/Observation](https://spravato.com/Observation).

If you have government insurance, or if you’re currently uninsured, SPRAVATO withMe can point you to cost support options that may be able to help. To learn about support options available for all SPRAVATO® patients, call **1-844-4S-WITHME** (1-844-479-4846).



Scan here to learn more about support offerings from SPRAVATO withMe

SPRAVATO withMe is limited to education about SPRAVATO®, its administration, and/or the condition it treats. It is not intended to provide medical advice, replace a treatment plan you receive from your doctor or nurse, or serve as a reason for you to start or stay on treatment.

Spravato®
(esketamine)
28 mg nasal spray

CONSIDER
SPRAVATO®

BENEFITS OF
SPRAVATO®

SIDE EFFECTS

TAKING
SPRAVATO®

STARTING
TREATMENT

SUPPORT

SUICIDAL
THOUGHTS &
ACTIONS

IMPORTANT SAFETY INFORMATION

Can SPRAVATO® benefit depressive symptoms of MDD with suicidal thoughts or actions?

SPRAVATO® is proven effective for depressive symptoms in adults with major depressive disorder (MDD) with suicidal thoughts or actions (MDSI)



In clinical studies of adults with MDD with suicidal thoughts or actions, those who took SPRAVATO® and an oral antidepressant experienced a greater reduction of depressive symptoms at 24 hours compared to those who received a placebo plus an oral antidepressant.*

Limitations of Use

The effectiveness of SPRAVATO® in preventing suicide or in reducing suicidal ideation or behavior has not been demonstrated. Use of SPRAVATO® does not preclude the need for hospitalization if clinically warranted, even if patients experience improvement after an initial dose of SPRAVATO®.



Help is available 24/7. If you're struggling with suicidal thoughts, call 988 Suicide & Crisis Lifeline

*Based on an overall score on a standardized rating scale.

Please see Important Safety Information in this brochure and see full [Prescribing Information](#), including Boxed WARNINGS, and [Medication Guide](#) for SPRAVATO® and discuss any questions you may have with your healthcare provider.

What is the most important information I should know about SPRAVATO®?

SPRAVATO® can cause serious side effects, including:

- **Sedation and dissociation.** SPRAVATO® may cause sleepiness (sedation), fainting, dizziness, spinning sensation, anxiety, or feeling disconnected from yourself, your thoughts, feelings, space and time (dissociation).
 - Tell your healthcare provider right away if you feel like you cannot stay awake or if you feel like you are going to pass out.
 - Your healthcare provider must monitor you for serious side effects for at least 2 hours after taking SPRAVATO®. Your healthcare provider will decide when you are ready to leave the healthcare setting.
- **Respiratory depression** was observed with the use of SPRAVATO®; additionally, there were rare reports of respiratory arrest.
 - Your healthcare provider must monitor you for serious side effects for at least 2 hours (including pulse oximetry) after taking SPRAVATO®. Your healthcare provider will decide when you are ready to leave the healthcare setting.
- **Abuse and misuse.** There is a risk for abuse and physical and psychological dependence with SPRAVATO® treatment. Your healthcare provider should check you for signs of abuse and dependence before and during treatment with SPRAVATO®.
 - Tell your healthcare provider if you have ever abused or been dependent on alcohol, prescription medicines, or street drugs.
 - Your healthcare provider can tell you more about the differences between physical and psychological dependence and drug addiction.
- **SPRAVATO® Risk Evaluation and Mitigation Strategy (REMS).** Because of the risks for sedation, dissociation, respiratory depression, and abuse and misuse, SPRAVATO® is only available through a restricted program called the SPRAVATO® Risk Evaluation and Mitigation Strategy (REMS) Program. SPRAVATO® can only be administered at healthcare settings certified in the SPRAVATO® REMS Program. Patients treated in outpatient healthcare settings (e.g., medical offices and clinics) must be enrolled in the program.

(Continued on next page)

Spravato®
(esketamine) 
28 mg nasal spray 

IMPORTANT SAFETY INFORMATION (Continued)

- **Increased risk of suicidal thoughts and actions.** Antidepressant medicines may increase suicidal thoughts and actions in some people 24 years of age and younger, **especially within the first few months of treatment or when the dose is changed.** **SPRAVATO® is not for use in children.**

- Depression and other serious mental illnesses are the most important causes of suicidal thoughts and actions. Some people may have a higher risk of having suicidal thoughts or actions. These include people who have (or have a family history of) depression or a history of suicidal thoughts or actions.

- **How can I watch for and try to prevent suicidal thoughts and actions in myself or a family member?**

- Pay close attention to any changes, especially sudden changes, in mood, behavior, thoughts, or feelings, or if you develop suicidal thoughts or actions.
- Tell your healthcare provider right away if you have any new or sudden changes in mood, behavior, thoughts, or feelings.
- Keep all follow-up visits with your healthcare provider as scheduled. Call your healthcare provider between visits as needed, especially if you have concerns about symptoms.

- **Tell your healthcare provider right away if you or your family member have any of the following symptoms, especially if they are new, worse, or worry you:**

- suicide attempts
- thoughts about suicide or dying
- worsening depression
- other unusual changes in behavior or mood

Do not take SPRAVATO® if you:

- have blood vessel (aneurysmal vascular) disease (including in the brain, chest, abdominal aorta, arms and legs)
- have an abnormal connection between your veins and arteries (arteriovenous malformation)
- have a history of bleeding in the brain

Please see Important Safety Information in this brochure and see full [Prescribing Information](#), including Boxed WARNINGS, and [Medication Guide](#) for SPRAVATO® and discuss any questions you may have with your healthcare provider.

- are allergic to esketamine, ketamine, or any of the other ingredients in SPRAVATO®.

If you are not sure if you have any of the above conditions, talk to your healthcare provider before taking SPRAVATO®.

Before you take SPRAVATO®, tell your healthcare provider about all of your medical conditions, including if you:

- have heart or brain problems, including:
 - high blood pressure (hypertension)
 - slow or fast heartbeats that cause shortness of breath, chest pain, lightheadedness, or fainting
 - history of heart attack
 - history of stroke
 - heart valve disease or heart failure
 - history of brain injury or any condition where there is increased pressure in the brain
- have liver problems
- have ever had a condition called “psychosis” (see, feel, or hear things that are not there, or believe in things that are not true).
- are pregnant or plan to become pregnant. SPRAVATO® may harm your baby. You should not take SPRAVATO® if you are pregnant.
 - Tell your healthcare provider right away if you become pregnant during treatment with SPRAVATO®.
 - If you are able to become pregnant, talk to your healthcare provider about methods to prevent pregnancy during treatment with SPRAVATO®.
- There is a pregnancy registry for women who are exposed to SPRAVATO® during pregnancy. The purpose of the registry is to collect information about the health of women exposed to SPRAVATO® and their baby. If you become pregnant during treatment with SPRAVATO®, talk to your healthcare provider about registering with the National Pregnancy Registry for Antidepressants at 1-844-405-6185 or online at <https://womensmentalhealth.org/clinical-and-research-programs/pregnancyregistry/antidepressants/>.

(Continued on next page)

Spravato®
(esketamine) 
28 mg nasal spray 

CONSIDER
SPRAVATO®

BENEFITS OF
SPRAVATO®

SIDE EFFECTS

TAKING
SPRAVATO®

STARTING
TREATMENT

SUPPORT

SUICIDAL
THOUGHTS &
ACTIONS

IMPORTANT SAFETY INFORMATION (Continued)

- are breastfeeding or plan to breastfeed. You should not breastfeed during treatment with SPRAVATO®.

Tell your healthcare provider about all the medicines that you take, including prescription and over-the-counter medicines, vitamins and herbal supplements. Taking SPRAVATO® with certain medicine may cause side effects.

Especially tell your healthcare provider if you take central nervous system (CNS) depressants, psychostimulants, or monoamine oxidase inhibitors (MAOIs) medicine. Keep a list of them to show to your healthcare provider and pharmacist when you get a new medicine.

How will I take SPRAVATO®?

- You will take SPRAVATO® nasal spray yourself, under the supervision of a healthcare provider in a healthcare setting. Your healthcare provider will show you how to use the SPRAVATO® nasal spray device.
- Your healthcare provider will tell you how much SPRAVATO® you will take and when you will take it.
- Follow your SPRAVATO® treatment schedule exactly as your healthcare provider tells you to.
- During and after each use of the SPRAVATO® nasal spray device, you will be checked by a healthcare provider who will decide when you are ready to leave the healthcare setting.
- You will need to plan for a caregiver or family member to drive you home after taking SPRAVATO®.
- If you miss a SPRAVATO® treatment, your healthcare provider may change your dose and treatment schedule.
- Some people taking SPRAVATO® get nausea and vomiting. You should not eat for at least 2 hours before taking SPRAVATO® and not drink liquids at least 30 minutes before taking SPRAVATO®.
- If you take a nasal corticosteroid or nasal decongestant medicine take these medicines at least 1 hour before taking SPRAVATO®.

What should I avoid while taking SPRAVATO®?

Do not drive, operate machinery, or do anything where you need to be completely alert after taking SPRAVATO®. **Do not** take part in these activities until the next day following a restful sleep. See **“What is the most important information I should know about SPRAVATO®?”**

What are the possible side effects of SPRAVATO®?

SPRAVATO® may cause serious side effects including:

See **“What is the most important information I should know about SPRAVATO®?”**

Increased blood pressure. SPRAVATO® can cause a temporary increase in your blood pressure that may last for about 4 hours after taking a dose. Your healthcare provider will check your blood pressure before taking SPRAVATO® and for at least 2 hours after you take SPRAVATO®. Tell your healthcare provider right away if you get chest pain, shortness of breath, sudden severe headache, change in vision, or seizures after taking SPRAVATO®.

Problems with thinking clearly. Tell your healthcare provider if you have problems thinking or remembering.

Bladder problems. Tell your healthcare provider if you develop trouble urinating, such as a frequent or urgent need to urinate, pain when urinating, or urinating frequently at night.

The most common side effects of SPRAVATO® when used along with an antidepressant taken by mouth include:

- feeling disconnected from yourself, your thoughts, feelings and things around you
- decreased feeling of sensitivity (numbness)
- dizziness
- feeling anxious
- nausea
- lack of energy
- feeling sleepy
- increased blood pressure
- spinning sensation
- vomiting
- feeling drunk
- feeling very happy or excited

If these common side effects occur, they usually happen right after taking SPRAVATO® and go away the same day.

These are not all the possible side effects of SPRAVATO®.

Call your doctor for medical advice about side effects. You may report side effects to FDA at 1-800-FDA-1088.

Please read full [Prescribing Information](#), including **Boxed WARNINGS**, and [Medication Guide](#) for SPRAVATO® and discuss any questions you may have with your healthcare provider.

cp-170363v3

Spravato®
(esketamine) 
28 mg nasal spray 

Spravato[®]
(esketamine) 
28 mg nasal spray



Watch stories told by real people
who have used SPRAVATO[®].



Scan here to locate certified
SPRAVATO[®] treatment centers

Please see Important Safety Information in this brochure and see full [Prescribing Information](#), including Boxed WARNINGS, and [Medication Guide](#) for SPRAVATO[®] and discuss any questions you may have with your healthcare provider.

© Janssen Pharmaceuticals, Inc. 2024 04/24 cp-437461v1

CONSIDER
SPRAVATO[®]

BENEFITS OF
SPRAVATO[®]

SIDE EFFECTS

TAKING
SPRAVATO[®]

STARTING
TREATMENT

SUPPORT

SUICIDAL
THOUGHTS &
ACTIONS